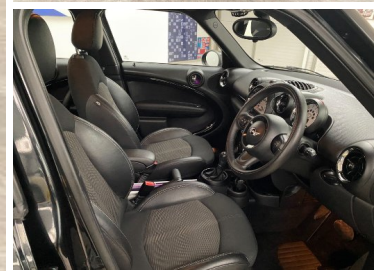




2013(63) Mini Countryman 2.0 Cooper D 5dr Auto

£9,799



Engine: Diesel
Body: Hatchback
Gearbox: Automatic
Capacity: 1995cc
Colour: Black
Mileage: 26,000
CO²: 149g/km
MPG: 50.4mpg
Top Speed: 112mph
BHP: 110bhp
Insurance Grp: 17E

Hennebry Ltd
 Unit E, Five Stones Nursery
 Toddington Lane
 Littlehampton
 West Sussex, BN17 7PP

FULL SERVICE HISTORY	16" ALLOYS
BRAKE FLUID LEVEL WARNING LIGHT	BRAKE PAD WEAR INDICATOR WARNING LIGHT
ELECTRIC POWER STEERING	ENGINE START/STOP BUTTON
EXTERIOR TEMPERATURE GAUGE	OIL LEVEL INDICATOR
REAR PARK DISTANCE CONTROL	RUN FLAT INDICATOR
SERVICE INTERVAL INDICATOR	AUXILIARY INPUT SOCKET
DAB DIGITAL RADIO	RADIO BOOST + SINGLE SLOT CD
ANTI DAZZLE MIRROR	BODY COLOUR BUMPERS
CHROME BEZELS AROUND REAR LIGHTS AND HEADLIGHTS	CHROME DOOR HANDLES
CHROME PLATED TRIM ON BOTTOM EDGE OF WINDOW	CHROME EXHAUST TAILPIPE
ELECTRIC FRONT AND REAR WINDOWS + ANTI TRAP + ONE TOUCH	CHROME-PLATED RADIATOR GRILLE SURROUND
HEATED DOOR MIRRORS/HEATED WINDSCREEN WASHERS	ELECTRICALLY ADJUSTABLE DOOR MIRRORS
RADIATOR GRILLE IN SILVER	FOLLOW ME HOME HEADLIGHTS
SILVER ROOF RAILS	HEATED REAR WINDOW WITH AUTOMATIC SWITCH OFF
3 REAR SEATS	METAL LOOK DOOR SILL FINISHERS
	REAR WIPER
	2 CUPHOLDERS IN FRONT CENTRE CONSOLE
	4 LASHING POINTS TO SECURE LUGGAGE

Call:01903 906133 | www.hennebry.co.uk